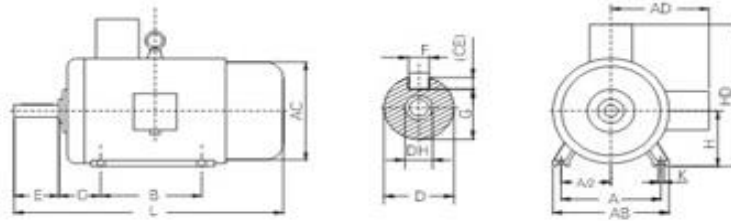




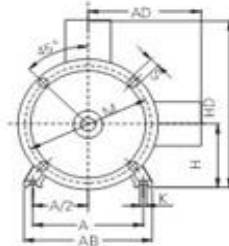
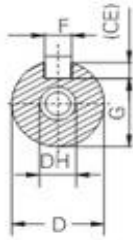
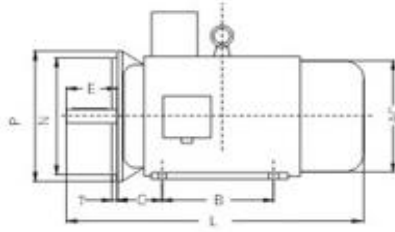
## OVERALL DIMENSIONS FOR Y3 CAST IRON SERIES

### IM B3

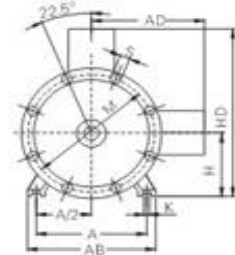


FRAME SIZE	POLES	A	A/2	B	C	D	E	F	G	H	K	AB	AC	AD	HD	L	DH*
160M	2 4 6 8	254	127	210	108	42	110	12	37	160	15	320	315	266	420	615	M16x36
160L	2 4 6 8	254	127	254	108	42	110	12	37	160	15	320	315	266	420	660	M16x36
180M	2 4 6 8	279	139.5	241	121	48	110	14	42.5	180	15	355	355	280	455	700	M16x36
180L	2 4 6 8	279	139.5	279	121	48	110	14	42.5	180	15	355	355	280	455	740	M16x36
200L	2 4 6 8	318	59	305	133	55	110	16	49	200	19	395	397	305	505	770	M20x42
225S	4 8	356	178	286	149	60	140	18	53	225	19	435	445	335	560	815	M20x42
225M	2	356	178	311	149	55	110	16	49	225	19	435	445	335	560	820	M20x42
	4 6 8	356	178	311	149	60	140	18	53	225	19	435	445	335	560	845	M20x42
250M	2	406	203	349	168	60	140	18	53	250	24	490	485	370	615	920	M20x42
	4 6 8	406	203	349	168	65	140	18	58	250	24	490	485	370	615	920	M20x42
280S	2	457	228	368	190	65	140	18	58	280	24	550	547	410	680	995	M20x42
	4 6 8	457	228	368	190	75	140	20	67.5	280	24	550	547	410	680	995	M20x42
280M	2	457	228.5	419	190	65	140	18	58	280	24	550	547	410	680	1045	M20x42
	4 6 8	457	228.5	419	190	75	140	20	67.5	280	24	550	547	410	680	1045	M20x42
315S	2	508	254	406	216	65	140	18	58	315	28	635	620	530	845	1185	M20x42
	4 6 8	508	254	406	216	80	170	22	71	315	28	635	620	530	845	1220	M20x42
315M	2	508	254	457	216	65	140	18	58	315	28	635	620	530	845	1290	M20x42
	4 6 8	508	254	457	216	80	170	22	71	315	28	635	620	530	845	1325	M20x42
315L	2	508	254	508	216	65	140	18	58	315	28	635	620	530	845	1290	M20x42
	4 6 8	508	254	508	216	80	170	22	71	315	28	635	620	530	845	1325	M20x42
355M	2	610	305	560	254	75	140	20	67.5	355	28	730	698	655	1010	1500	M20x42
	4 6 8	610	305	560	254	95	170	25	86	355	28	730	698	655	1010	1530	M20x42
355L	2	610	305	630	254	75	140	20	67.5	355	28	730	698	655	1010	1500	M20x42
	4 6 8	610	305	630	254	95	170	25	86	355	28	730	698	655	1010	1530	M20x42

**IM B3|B5**



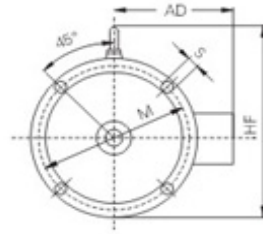
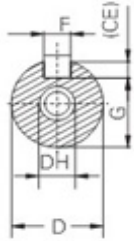
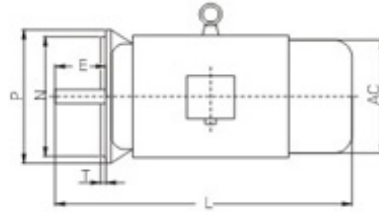
H160-200



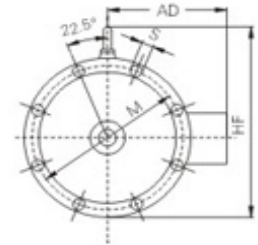
H225-355

FRAME SIZE	POLES	A	A/2	B	C	D	E	F	G	H	K	M	N	P	S	T	FLANGE HOLES	AB	AC	AD	HD	L	DH"
160M	2 4 6 8	254	127	210	108	42	110	12	37	160	15	300	250	350	19	5	4	320	315	255	420	615	M16x36
160L	2 4 6 8	254	127	254	108	42	110	12	37	160	15	300	250	350	19	5	4	320	315	255	420	660	M16x36
180M	2 4 6 8	279	139.5	241	121	48	110	14	42.5	180	15	300	250	350	19	5	4	355	355	280	455	700	M16x36
180L	2 4 6 8	279	139.5	279	121	48	110	14	42.5	180	15	300	250	350	19	5	4	355	355	280	455	740	M16x36
200L	2 4 6 8	318	159	305	133	55	110	16	49	200	19	350	300	400	19	5	4	395	397	305	505	770	M20x42
225S	4 8	356	178	286	149	60	140	18	53	225	19	400	350	450	19	5	8	435	445	335	560	815	M20x42
225M	2	356	178	311	149	55	110	16	49	225	19	400	350	450	19	5	8	435	445	335	560	820	M20x42
	4 6 8	356	178	311	149	60	140	18	53	225	19	400	350	450	19	5	8	435	445	335	560	845	M20x42
250M	2	406	203	349	168	60	140	18	53	250	24	500	450	550	19	5	8	490	485	370	615	920	M20x42
	4 6 8	406	203	349	168	65	140	18	58	250	24	500	450	550	19	5	8	490	485	370	615	920	M20x42
280S	2	457	228.5	368	190	65	140	18	58	280	24	500	450	550	19	5	8	550	547	410	680	995	M20x42
	4 6 8	457	228.5	368	190	75	140	20	67.5	280	24	500	450	550	19	5	8	550	547	410	680	995	M20x42
280M	2	457	228.5	419	190	65	140	18	58	280	24	500	450	550	19	5	8	550	547	410	680	1045	M20x42
	4 6 8	457	228.5	419	190	75	140	20	67.5	280	24	500	450	550	19	5	8	550	547	410	680	1045	M20x42
315S	2	508	254	406	216	65	140	18	58	315	28	600	550	660	24	6	8	635	620	845	800	1185	M20x42
	4 6 8	508	254	406	216	80	170	22	71	315	28	600	550	660	24	6	8	635	620	530	845	1220	M20x42
315M	2	508	254	457	216	65	140	18	58	315	28	600	550	660	24	6	8	635	620	530	845	1290	M20x42
	4 6 8	508	254	457	216	80	170	22	71	315	28	600	550	660	24	6	8	635	620	530	845	1325	M20x42
315L	2	508	254	508	216	65	140	18	58	315	28	600	550	660	24	6	8	635	620	530	845	1290	M20x42
	4 6 8	508	254	508	216	80	170	22	71	315	28	600	550	660	24	6	8	635	620	530	845	1325	M20x42
355M	2	610	305	560	254	75	140	20	67.5	355	28	740	680	800	24	6	8	730	698	655	1010	1500	M20x42
	4 6 8	610	305	560	254	95	170	25	86	355	28	740	680	800	24	6	8	730	698	655	1010	1530	M20x42
355L	2	610	305	630	254	75	140	20	67.5	355	28	740	680	800	24	6	8	730	698	655	1010	1500	M20x42
	4 6 8	610	305	630	254	95	170	25	86	355	28	740	680	800	24	6	8	730	698	655	1010	1530	M20x42

# IM B5



H160-200



H225-280

FRAME SIZE	POLES	D	E	F	G	M	N	P	S	T	FLANGE HOLES	AC	AD	HF	L	DH*
160M	2 4 6 8	42	110	12	37	300	250	350	19	5	4	315	255	385	615	M16x36
160L	2 4 6 8	42	110	12	37	300	250	350	19	5	4	315	255	385	660	M16x36
180M	2 4 6 8	48	110	14	42.5	300	250	350	19	5	4	355	280	430	700	M16x36
180L	2 4 6 8	48	110	14	42.5	300	250	350	19	5	4	355	280	430	740	M16x36
200L	2 4 6 8	55	110	16	49	350	300	400	19	5	4	397	305	480	770	M20x42
225S	4 8	60	140	18	53	400	350	450	19	5	8	445	335	535	815	M20x42
225M	2	55	110	16	49	400	350	450	19	5	8	445	335	535	820	M20x42
	4 6 8	60	140	18	53	400	350	450	19	5	8	445	335	535	845	M20x42
250M	2	60	140	18	53	500	450	550	19	5	8	485	370	595	920	M20x42
	4 6 8	65	140	18	58	500	450	550	19	5	8	485	370	595	920	M20x42
280S	2	65	140	18	58	500	450	550	19	5	8	547	410	650	995	M20 x42
	4 6 8	75	140	20	67.5	500	450	550	19	5	8	547	410	650	995	M20M2
280M	2	65	140	18	58	500	450	550	19	5	8	547	410	650	1045	M20x42
	4 6 8	75	140	20	67.5	500	450	550	19	5	8	547	410	650	1045	M20x42